

2. Quartfagott

ILSEBILL

Eine Schauspielmusik nach dem Märchen der Gebrüder Grimm "Vom Fischer und seiner Frau"

zum 8. Fagottinosymposium vom 10. bis 12. September 2010
in Schwerin

1 Vorspiel

Text und Musik
Jörg Möhler

Allegro moderato

$\text{♩} = 116$

4

Tutti



13



21



30

rit.

Moderato

$\text{♩} = 69$



36



2 Der Fischer auf dem See

friedlich und ruhig

Kleines Ensemble

$\text{♩} = 96$

6



10

3



17

2



2a Der Wels

23 $\text{♩} = 160$

Kleines Ensemble

26 **Allegro vivo** $\text{♩} = 160$ 

31

rit.



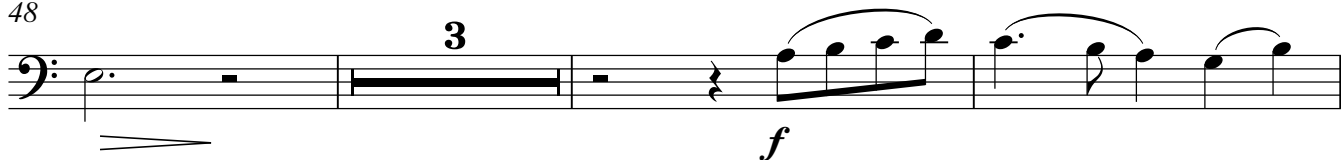
2b

wieder friedlich und ruhig

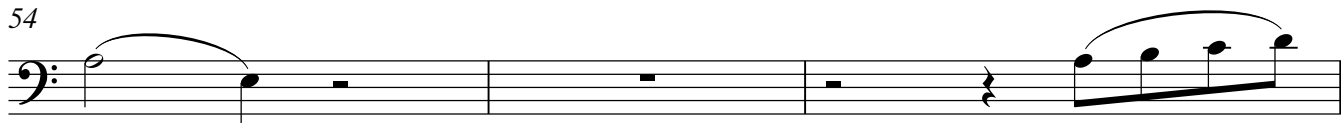
Kleines Ensemble

 $\text{♩} = 96$ 

48



54



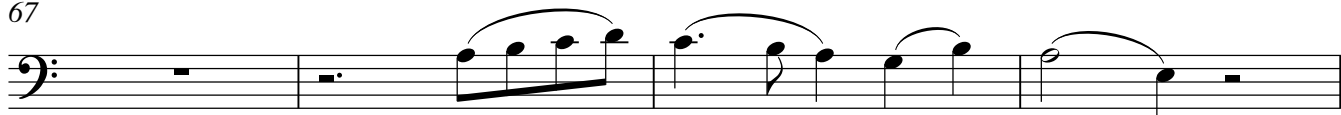
57



63



67



71



3 Gehe hin!

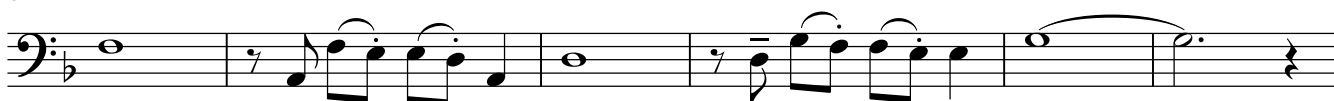
sehr gehalten

Kleines Ensemble

♩ = 64



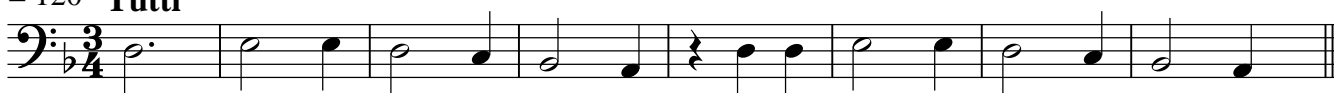
8



14



4 Manntje, manntje Timpe Te

Allegro moderato♩ = 120 **Tutti**

9

Solo

Fischer

Mann - tje, Mann - tje, Tim - pe Te, gro - ßer Wels im tie fen See, my - ne

18



Fru, de Il - se - bill, will nich so, as ik wohl will,

26



nich, as ik wohl will.

33

♩ = 160

4a Der Wels

4



5 Ein wunderbares Häuschen

Allegretto

♩ = 118

2

Tutti



11



18



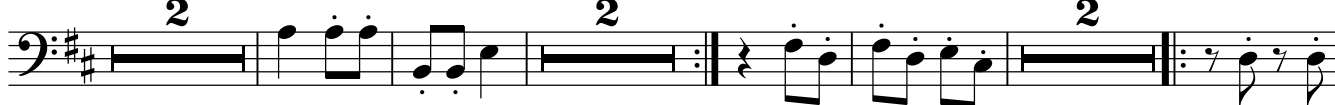
28



37



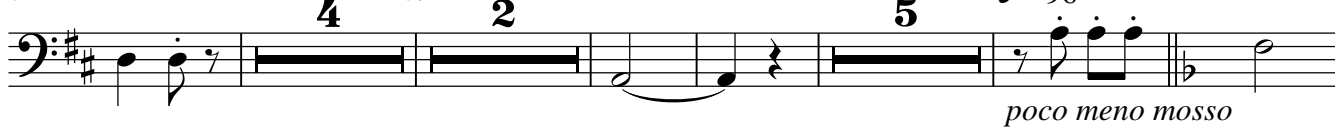
45



56



64



78

*poco meno mosso*

rit.

6 Gehe hin!

Kleines Ensemble 2

1 **sehr gehalten**

Musical notation for measures 1-7 of '6 Gehe hin!'. The piece is in bass clef, 4/4 time, and B-flat major. It begins with a piano (*p*) dynamic. The melody consists of quarter and eighth notes, with some rests.

Musical notation for measures 8-13 of '6 Gehe hin!'. The melody continues with eighth and quarter notes, featuring some slurs and ties.

Musical notation for measures 14-17 of '6 Gehe hin!'. The piece concludes with a final cadence in B-flat major.

Allegro moderato 7 Manntje, manntje Timpe Te

$\text{♩} = 120$ **Tutti**

Musical notation for measures 1-8 of '7 Manntje, manntje Timpe Te'. The piece is in bass clef, 3/4 time, and B-flat major. It starts with a **Tutti** dynamic.

Musical notation for measures 9-17 of '7 Manntje, manntje Timpe Te'. This section is marked **Solo** and features a more melodic line with slurs and ties.

Fischer

Mann - tje, Mann - tje, Tim - pe Te, gro - ßer Wels im tie fen See, my - ne

Musical notation for measures 18-25 of '7 Manntje, manntje Timpe Te'. The melody continues with quarter and eighth notes.

Fru, de Il - se - bill, will nich so, as ik wohl will,

Musical notation for measures 26-33 of '7 Manntje, manntje Timpe Te'. The piece concludes with a final cadence.

nich, as ik wohl will.

7a Der Wels

33 $\text{♩} = 120$ rit. $\text{♩} = 86$

8 Im Schloss

1 **majestätisch** **Tutti**

12

17

22 **Kleines Ensemble**

31

42 **Tutti**

48

9 Da war der Fischer sehr verängstigt!

54 Windmaschine

Kleines Ensemble

Musical notation for the first part of '9 Da war der Fischer sehr verängstigt!'. It features a bass clef, a 4/4 time signature, and a key signature of one flat. The piece includes a 3-measure rest, followed by a melodic line starting with a half note G2, quarter notes A2, B2, and C3, and a 2-measure rest. The dynamic marking is *mp*.

10 Manttje, manttje Timpe Te

Allegro moderato

$\text{♩} = 120$ **Tutti**

Musical notation for the beginning of '10 Manttje, manttje Timpe Te'. It features a bass clef, a 3/4 time signature, and a key signature of one flat. The melody consists of quarter notes: G2, A2, B2, C3, D3, E3, F3, G3, A3, B3, C4, D4, E4, F4, G4, A4, B4, C5.

9 **Solo**

Musical notation for the solo part of '10 Manttje, manttje Timpe Te'. It features a bass clef and a key signature of one flat. The melody consists of quarter notes: G2, A2, B2, C3, D3, E3, F3, G3, A3, B3, C4, D4, E4, F4, G4, A4, B4, C5.

Fischer

Musical notation for the vocal part of '10 Manttje, manttje Timpe Te'. It features a treble clef and a key signature of one flat. The melody consists of quarter notes: G3, A3, B3, C4, D4, E4, F4, G4, A4, B4, C5, D5, E5, F5, G5, A5, B5, C6.

Mann - tje, Mann - tje, Tim - pe Te, gro - ßer Wels im tie fen See, my - ne

18

Musical notation for the second part of '10 Manttje, manttje Timpe Te'. It features a bass clef and a key signature of one flat. The melody consists of quarter notes: G2, A2, B2, C3, D3, E3, F3, G3, A3, B3, C4, D4, E4, F4, G4, A4, B4, C5.

Musical notation for the vocal part of the second part of '10 Manttje, manttje Timpe Te'. It features a treble clef and a key signature of one flat. The melody consists of quarter notes: G3, A3, B3, C4, D4, E4, F4, G4, A4, B4, C5, D5, E5, F5, G5, A5, B5, C6.

Fru, de Il - se - bill, will nich so, as ik wohl will,

26

Musical notation for the third part of '10 Manttje, manttje Timpe Te'. It features a bass clef and a key signature of one flat. The melody consists of quarter notes: G2, A2, B2, C3, D3, E3, F3, G3, A3, B3, C4, D4, E4, F4, G4, A4, B4, C5.

Musical notation for the vocal part of the third part of '10 Manttje, manttje Timpe Te'. It features a treble clef and a key signature of one flat. The melody consists of quarter notes: G3, A3, B3, C4, D4, E4, F4, G4, A4, B4, C5, D5, E5, F5, G5, A5, B5, C6.

nich, as ik wohl will.

10a Der Wels

33

Musical notation for the beginning of '10a Der Wels'. It features a bass clef, a key signature of two flats, and a 4/4 time signature. The piece includes a 3-measure rest, followed by a melodic line starting with a half note G2, quarter notes A2, B2, and C3, and an 8-measure rest.

11 Im Dom

1 ruhig

Tutti

3 5

Musical notation for measures 1-5 of '11 Im Dom'. Measure 1 has a fermata. Measure 3 has a '3' above it. Measure 5 has a '5' above it.

14 19

Musical notation for measures 14-19 of '11 Im Dom'. Measure 19 has a '19' above it.

38 rit.

Musical notation for measures 38-43 of '11 Im Dom'. Measure 38 has a '38' above it. Measure 43 has a 'rit.' above it.

12 Ein heftiger Sturm

Erzähler

43 Windmaschine

$\text{♩} = 96$

Tutti

4 6 8 f

Musical notation for measures 43-52 of '12 Ein heftiger Sturm'. Measure 43 has a '43' above it. Measure 44 has a '4' above it. Measure 45 has a '6' above it. Measure 46 has an '8' above it. Measure 47 has an 'f' below it.

10 ff

Musical notation for measures 53-62 of '12 Ein heftiger Sturm'. Measure 53 has a '10' above it. Measure 54 has an 'ff' below it.

17 2 4 f

Musical notation for measures 63-72 of '12 Ein heftiger Sturm'. Measure 63 has a '17' above it. Measure 64 has a '2' above it. Measure 65 has a '4' above it. Measure 66 has an 'f' below it.

28

Musical notation for measures 73-82 of '12 Ein heftiger Sturm'. Measure 73 has a '28' above it.

36 2

Musical notation for measures 83-92 of '12 Ein heftiger Sturm'. Measure 83 has a '36' above it. Measure 92 has a '2' above it.

43

Musical notation for measures 93-102 of '12 Ein heftiger Sturm'. Measure 93 has a '43' above it.

49 2

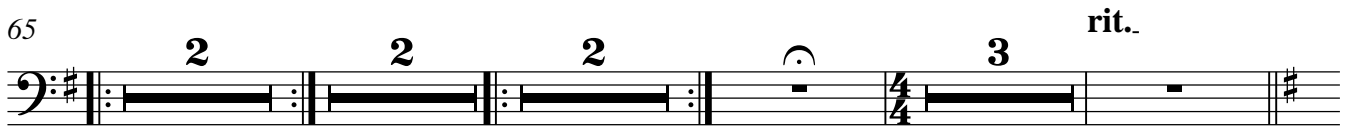
Musical notation for measures 103-112 of '12 Ein heftiger Sturm'. Measure 103 has a '49' above it. Measure 112 has a '2' above it.

56



12a Manntje, manntje Timpe Te

65



13 Nachspiel

Allegretto

♩ = 118

2

Tutti



11



25



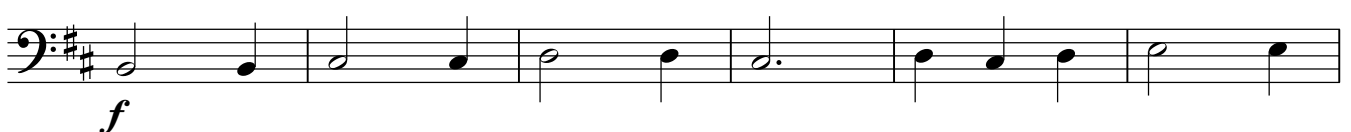
37



49



57



63

