

Kontrafagott

# ILSEBILL

Eine Schauspielmusik nach dem Märchen der Gebrüder Grimm "Vom Fischer und seiner Frau"

zum 8. Fagottinosymposium vom 10. bis 12. September 2010  
in Schwerin

## 1 Vorspiel

Text und Musik  
Jörg Möhler

**Allegro moderato**

♩ = 116 **12 Tutti**

27 *f* *rit.* **Moderato** ♩ = 69 *mf*

36 *f* *dim.* *p*

## 2 Der Fischer auf dem See

Kleines Ensemble

♩ = 96 **friedlich und ruhig**

6 *mf*

11

16

20 *rit..*

## Kontrafagott

## 2a Der Wels

Kleines Ensemble

23  $\text{♩} = 160$   
**2** *Allegro vivo*  $\text{♩} = 160$   
*f* *sfz*

31 *rit.*  
**3**

## 2b

Kleines Ensemble

$\text{♩} = 96$   
 wieder friedlich und ruhig

46

51

57 *Solo*  
*f*

62

67

72

75

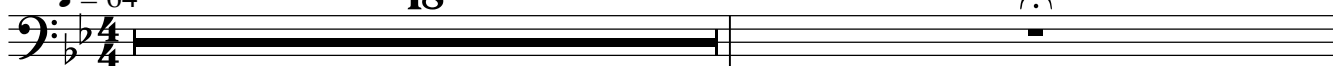
Kontrafagott  
3 Gehe hin!

1 sehr gehalten

$\text{♩} = 64$

18

Kleines Ensemble



4 Manntje, manntje Timpe Te

**Allegro moderato**

$\text{♩} = 120$

**Tutti**



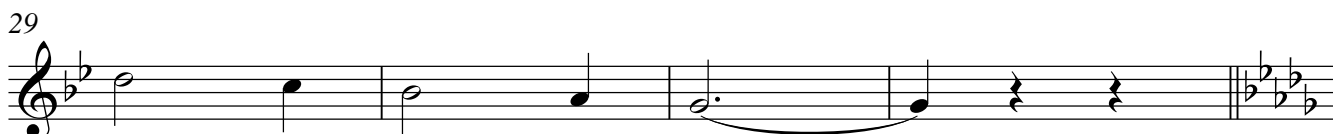
9 singen!



Mann - tje, Mann - tje, Tim - pe Te, gro - ßer Wels im tie fen See, my - ne



Fru, de Il - se - bill, will nich so, as ik wohl will,



nich, as ik wohl will.

4a Der Wels

33  $\text{♩} = 160$

5

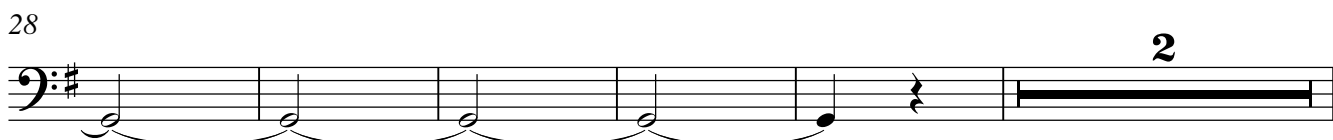


5 Ein wunderbares Häuschen

**Allegretto**

$\text{♩} = 118$

**Tutti**



4

### Kontrafagott

35 Solo

53

63

79

rit. . . . .

## 6 Gehe hin!

1 sehr gehalten

Kleines Ensemble  
TACET

## 7 Manntje, manntje Timpe Te

Allegro moderato

$\text{♩} = 120$  Tutti

9 singen!

Mann - tje, Mann - tje, Tim - pe Te, gro - ßer Wels im tie fen See, my - ne

18

Fru, de Il - se - bill, will nich so, as ik wohl will,

25

nich, as ik wohl will.

33

## 7a Der Wels

## 8 Im Schloss

1 **majestätisch** **Tutti**

12



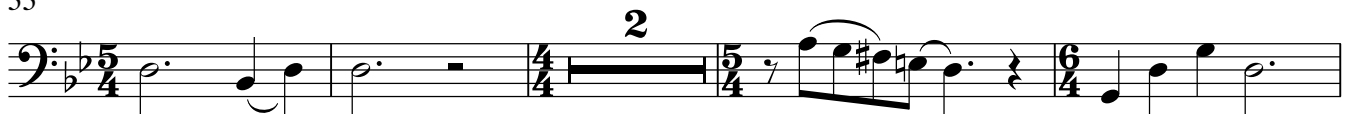
22

**Solo** **Kleines Ensemble**

28



33



39



44

**Tutti**

## 9 Da war der Fischer sehr verängstigt!

54 Windmaschine Kleines Ensemble

Windmaschine Kleines Ensemble

2 3

*p*

Detailed description: This block contains the musical notation for the beginning of 'Da war der Fischer sehr verängstigt!'. It starts at measure 54 on a bass clef staff with a key signature of two flats. The music features a 'Windmaschine' (wind machine) part with a whole note rest and a 'Kleines Ensemble' part with a quarter note rest. This is followed by a melodic line with a slur and a dynamic marking of *p*. There are two measures with a '2' above the staff and one measure with a '3' above the staff, indicating multi-measure rests.

## 10 Mantje, mantje Timpe Te

**Allegro moderato**

♩ = 120

**Tutti**

Detailed description: This block shows the first line of musical notation for 'Mantje, mantje Timpe Te'. It is on a bass clef staff with a key signature of two flats and a 3/4 time signature. The tempo is marked 'Allegro moderato' and 'Tutti' with a quarter note equal to 120 beats per minute. The melody consists of quarter and eighth notes.

9 singen!

Detailed description: This block shows the vocal line starting at measure 9. It is on a treble clef staff with a key signature of two flats and a 3/4 time signature. The melody consists of quarter and eighth notes.

Mann - tje, Mann - tje, Tim - pe Te, gro - ßer Wels im tie fen See, my - ne

18

Detailed description: This block shows the vocal line starting at measure 18. It is on a treble clef staff with a key signature of two flats and a 3/4 time signature. The melody consists of quarter and eighth notes.

Fru, de Il - se - bill, will nich so, as ik wohl will,

25

Detailed description: This block shows the vocal line starting at measure 25. It is on a treble clef staff with a key signature of two flats and a 3/4 time signature. The melody consists of quarter and eighth notes.

nich, as ik wohl will.

## 10a Der Wels

33

Detailed description: This block shows the musical notation for 'Der Wels' starting at measure 33. It is on a treble clef staff with a key signature of two flats and a 2/4 time signature. The music features multi-measure rests of 4, 8, and 4 measures.

## 11 Im Dom

1 ruhig 3 Tutti 12

Detailed description: This block shows the musical notation for 'Im Dom' starting at measure 1. It is on a bass clef staff with a key signature of two flats and a 2/2 time signature. The tempo is marked '1 ruhig' and '3 Tutti 12'. The music features multi-measure rests of 3 and 12 measures.

21

Detailed description: This block shows the musical notation for 'Im Dom' starting at measure 21. It is on a bass clef staff with a key signature of two flats and a 2/2 time signature. The melody consists of quarter and eighth notes.

28

Detailed description: This block shows the musical notation for 'Im Dom' starting at measure 28. It is on a bass clef staff with a key signature of two flats and a 2/2 time signature. The melody consists of quarter and eighth notes.

36 *rit.*  
  
Windmaschine

1  $\text{♩} = 96$  12 Ein heftiger Sturm

10 *p* *f*  
  
8 *f* Solo a2!  
  
25   
33 *2*  
  
41   
48 *8* *p* *attacca*

12a Manntje, manntje Timpe Te

65 *pp* wiederhole bis Zeichen! *pp*  
  
69 *pp* wiederhole bis Zeichen! *3* *rit.*

## 13 Nachspiel

♩ = 118 **Allegretto**  
**Tutti**

mf

4 4

17

7

34

12

f

56

63

rit.